







Légende

-  Habitation
-  Enseignement
-  Santé
-  Voie ferrée
-  Route
-  Zone industrielle

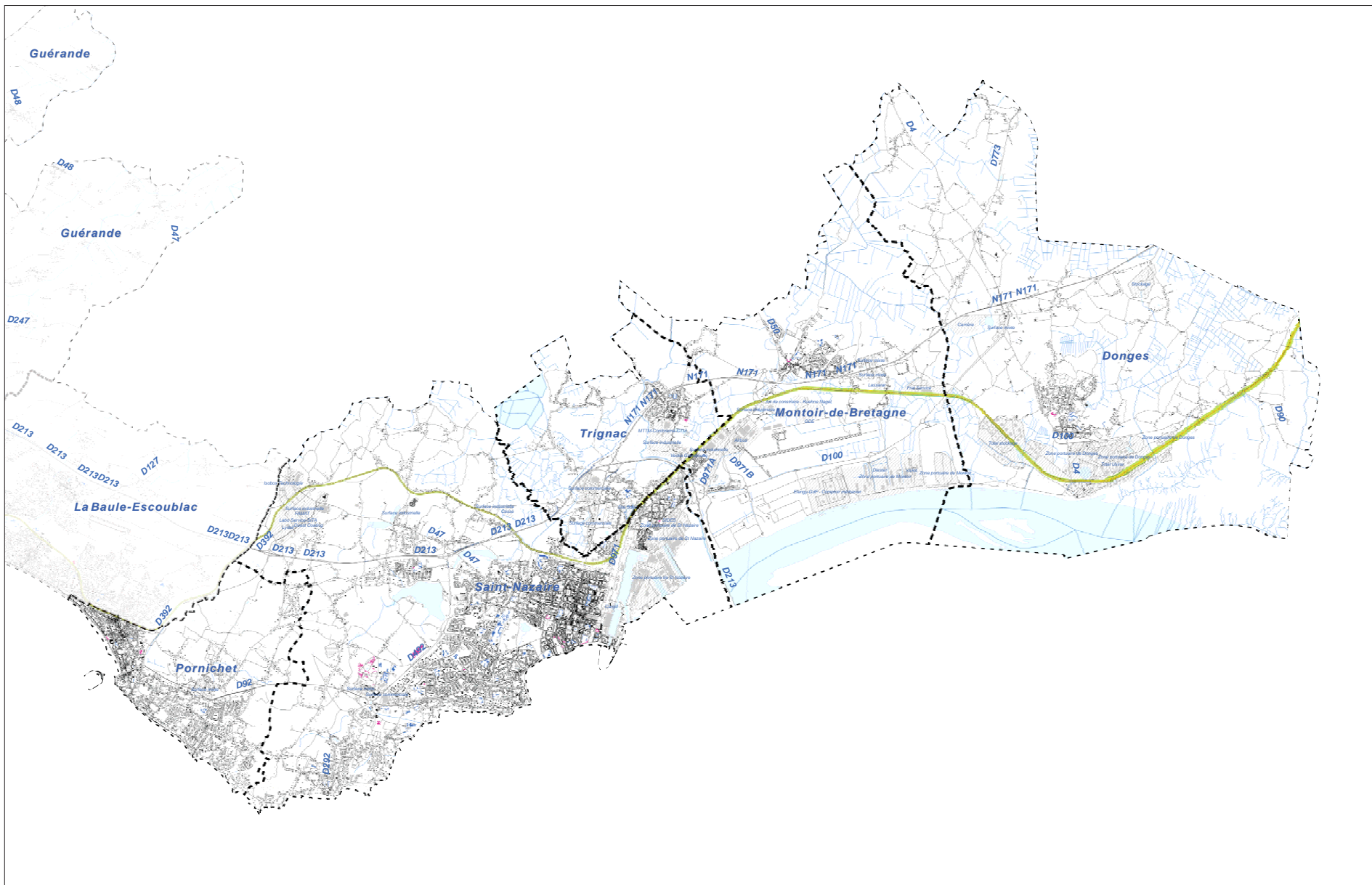
Ln Fer

Echelle Ln

-  50-55 dB(A)
-  55-60 dB(A)
-  60-65 dB(A)
-  65-70 dB(A)
-  70-75 dB(A)
-  > 75 dB(A)



0 0.5 1 2 km



Nature et date des données utilisées :

- Objets : BD Topo(c) IGN 2007
- Trafics Routes Etat DIRO 2011
- Trafics Routes Département CG44 2010 à 2012
- Trafics Routes Communes 2000 à 2012
- Trafics et données Voie ferrée RFF 2011

Pilotes et partenaires



Réalisée par Impédance et David Guérin
Dossier EN4418

Mars 2013